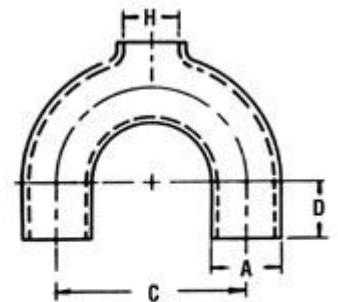


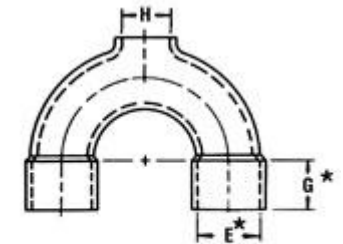
## Engineered Products: Extruded Return Bends

By extruding various size openings from the side or top, these bends are particularly adaptable to soldering or automated brazing and may reflect cost reduction opportunities in assembly. Available in three types of ends, Elkhart Products Corporation is one of the largest manufacturers of extruded return bends in the industry.

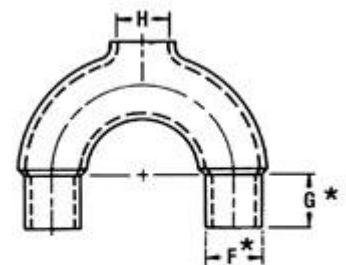
Tube Size								Type			
O.D. A	Wall B	Center C	Tangent D	E	F	G	H	7	8	9	10
5/16	0.028	.800	0.56				.317				•
	0.032	.800	0.16				.312	•			
	0.032	1.000	0.25				.317				•
	0.032	1.250	0.25				.317	•			
3/8	0.035	.765	0.31				.379	•			
	0.042	.765	0.47				.317	•			
	0.035	.765	0.5				.380	•			
	0.035	.800	0.25				.378	•			•
	0.028	.800	0.25				.378	•			
	0.042	.800	0.25				.504	•			
	0.049	.800	0.25				.505	•			
	0.042	.800	0.31				.500	•			
	0.049	.800	0.41				.378				•
	0.049	.800	0.48				.342				•
	0.042	.800	0.56				.373				•
	0.042	.800	0.56				.342	•			•
	0.049	.800	0.6				.378				•
	0.042	.800	1.04				.342				•
	0.042	.800	1.16				.342				•
	0.035	.866	0.25				.380				•
0.028	.866	0.25				.379	•				
0.035	.901	0.25				.379	•				
0.028	.901	0.38			0.250	0.266	.375			•	
0.042	.988	0.38					.516	•			
0.035	1.000	0.06					.380			•	
0.035	1.000	0.19					.312	•			
0.035	1.000	0.25					.380	•			•
0.035	1.000	0.25					.434	•			
0.028	1.000	0.25					.380	•			
0.035	1.000	0.25					.316	•			
0.035	1.000	0.25					.428	•			
0.035	1.000	0.31					.375	•			•
0.028	1.000	0.31					.317	•			
0.028	1.000	0.41					.154	•			



**TYPE 7**  
Straight Tangent



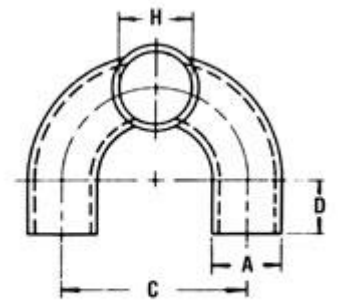
**TYPE 8**  
Expanded Tangent



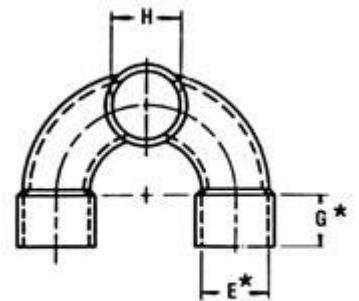
**TYPE 9**  
Reduced Tangent



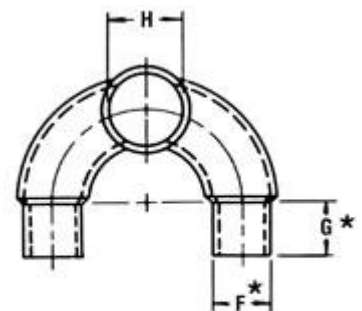
	0.042	1.000	0.5			.342	•		
	0.049	1.000	0.56			.472	•		
	0.042	1.000	0.56			.380	•		•
	0.042	1.000	0.56			.342	•		
	0.028	1.000	0.56			.380	•		
	0.035	1.000	0.66			.379			•
	0.035	1.000	0.69	0.318	0.250	.504		•	
	0.035	1.000	0.75			.342			•
	0.035	1.000	0.75			.380			•
	0.035	1.000	0.88	0.353	0.880	.380		•	
	0.042	1.000	1.38			.342	•		
	0.035	1.118	0.25			.317	•		
	0.025	1.250	0.49			.380			•
	0.028	1.250	0.12			.380	•		
	0.028	1.250	0.25			.380	•		
	0.035	1.250	0.25			.380	•		•
	0.028	1.250	0.25			.255	•		
	0.035	1.250	0.25	0.38	0.250	.380		•	
	0.035	1.250	0.38			.379			•
	0.035	1.250	0.75			.379			•
	0.035	1.250	0.88	0.353	0.880	.380		•	
	0.042	1.414	0.55			.380			•
	0.028	1.414	0.56			.380	•		
7/16	0.028	1.000	0.81	0.355	0.531	.500		•	
1/2	0.042	.924	0.28			.504	•		•
	0.042	1.000	0.31	0.375	0.310	.626		•	
	0.025	1.250	0.16			.507			•
	0.035	1.250	0.19			.504			•
	0.349	1.250	0.25			.629			•
	0.035	1.250	0.25			.192			•
	0.035	1.250	0.25			.504			•
	0.042	1.250	0.25			.505	•		
	0.035	1.250	0.25	0.483	0.250	.505		•	
	0.028	1.250	0.28			.504	•		
	0.035	1.250	0.31			.504	•		•
	0.035	1.250	0.31			.243	•		
	0.035	1.250	0.31	0.483	0.310	.505		•	
	0.035	1.250	0.31			.630	•		
	0.035	1.250	0.31	0.504	0.310	.505		•	
	0.035	1.250	0.38	0.461	0.380	.505		•	
	0.035	1.250	0.41	0.375	0.410	.504		•	
	0.035	1.250	0.44	0.375	0.250	.631		•	
	0.035	1.250	0.83	0.478	0.750	.504		•	
	0.035	1.500	0.19			.504	•		



**TYPE 10**  
Straight Tangent



**TYPE 11**  
Expanded Tangent



**TYPE 12**  
Reduced Tangent

	0.035	1.562	0.5				.504	•		
5/8	0.042	1.500	0.38		0.500	0.250	.504		•	
	0.042	1.500	0.38				.629		•	
	0.042	1.500	0.38		0.615	0.375	.504		•	
	0.042	1.750	0.38		0.570	0.380	.630		•	

Tube Size								Type			
O.D. A	Wall B	Center C	Tangent D	E	F	G	H	11	12	13	15
5/16	0.032	0.901	0.230		0.297	0.250	.300				•
	0.032	0.901	0.250		0.296	0.250	.300				•
3/8	0.035	0.750	0.190		0.359	0.190	.360		•		
	0.028	0.750	0.190		0.348	0.190	.255		•		
	0.035	0.901	0.250		0.360	0.250	.363				•
	0.035	0.901	0.250				.380				•
1/2	0.042	1.000	0.380		0.375	0.250	.629		•		
	0.035	1.500	0.190		0.483	0.190	.505		•		
5/8	0.042	1.500	0.380		0.615	0.380	.629		•		

